



أهم الأخبار والأحداث الفلكية خلال عام 2006

(2006/12/27) 2041

2006 20 2006XG1
1400 600
31 5,000
40,000/1 .2041
!

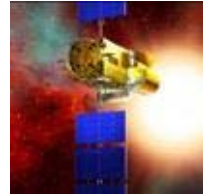


(2006/12/27)

COROT

120,000

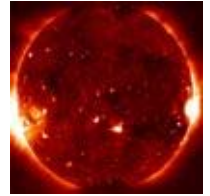
« »



(2006/12/22)

9

« »



(2006/12/20)

)

.(

.(hybrid gamma-ray burst)

)

()

102

Swift



(2006/12/13)



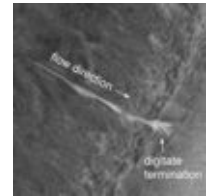
(2006/12/12)

150

1.5



(2006/12/6)



(2006/12/5)



(2006/12/4)



Global)

14

1000

(Exploration Strategy

(2006/12/1)

.C6H-



(2006/12/1)

Tagish

2000



(2006/11/29)

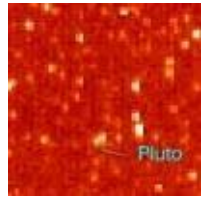
.1900

Antikythera
Nature



(2006/11/28)

.2015



(2006/11/27)

NGC1316

26

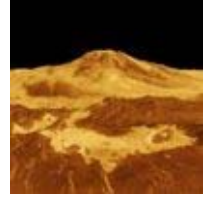
4



«Vesper»

(2006/11/27)

« »



2015

(2006/11/27)

1000

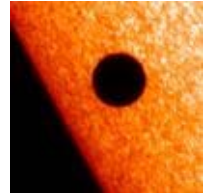
«GRS1915+105»



950

(2006/11/17)

(Solar B)



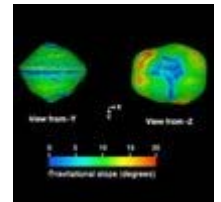
(2006/11/16) 1999 KW4

.1999

«1999KW4»

()

2001



(2006/11/15)

20

24 23



33

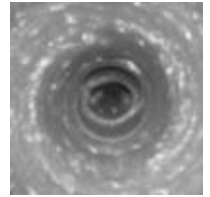
(2006/11/10)



1996

(2006/11/10)

8000

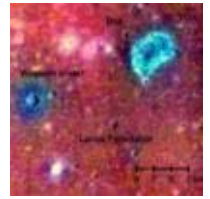


(2006/11/9)

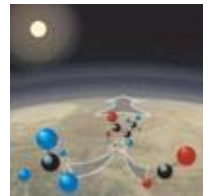
3

-1

10



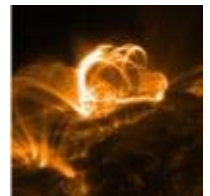
(2006/11/7)



(2006/11/7)

...

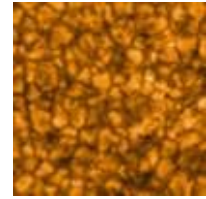
135



II Pegasi

(2006/11/2)
Hinode
23

-
) «Solar-B»
22 (



(2006/11/1)
2003
2013
2008
3-2



(2006/11/1)



(2006/10/26)

« »
STEREO
25

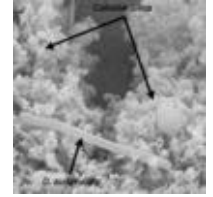


(2006/11/25)

500,000
65



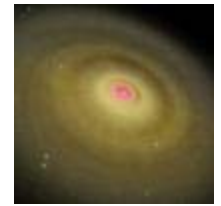
(2006/10/25)



!

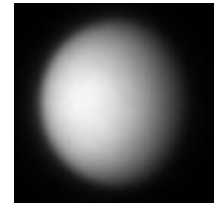
(2006/10/26)

HD141569A



(2006/10/24)

2990)



(

.2011

-

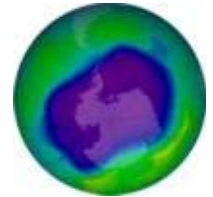
-

2008

2007

(2006/10/19)

27.5



(2006/10/19)

(HD 3651B

) HD 3651



36

600 500

60 20

(2006/10/18)

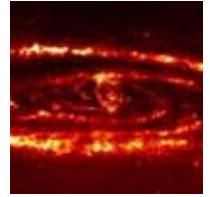


(2006/10/18)

200

200

M32

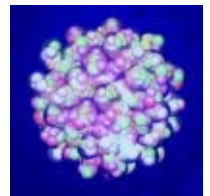


(2006/10/16) **118**

:

.118

0.9



2004-1999

116

113

117

(2006/10/14)



(2006/10/13)

1.8



(2006/10/12)

4.6

1996

40

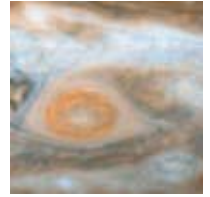
0.059



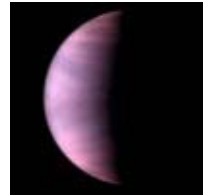
(2006/10/11)

Jr

640



(2006/10/10)

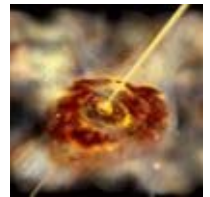


(2006/10/6)

200

.Swift

400



(2006/10/4)

16

16

26,000

180,000



USPP (ultra-short-period planets)

(2006/10/2) 2018

2018

50

3,000



(2006/10/2)

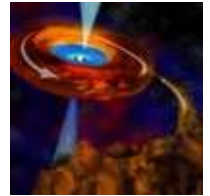
1,700×3,000



(2006/9/27)

10

20



(2006/9/27)

40×60

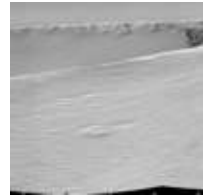
.2006/9/23

25-20

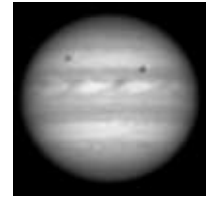


(2006/9/27)

2004



2006/9/4
 (2006/9/27)
 2006/1/21
 291
 .2007/2/28
 9 2015



(2006/9/19)
 G E



(2006/9/19)
 12.88
 780



(2006/9/18)
 142 6



()

(2006/9/14)
 (Dysnomia) (Eris) :



%5

.2005/1/5

(2006/9/8)
500



10

.%1.5

2.5

10

Keck

(2006/9/7)



12

200

(2006/9/7) 1-



2890

SMART 1

(2006/8/24)

...



(2006/8/21)

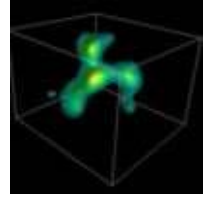
1-

1-



(2006/7/31)

200

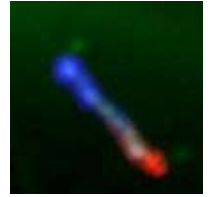


2

30

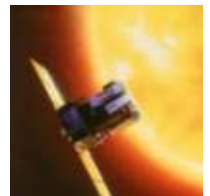
10

(2006/6/21)



(2006/5/24) 2009

(SOHO)



3

1995

.2009

5

(2006/4/3)



(2006/3/10)

550



10

(2006/3/9)

:

(extreme helium stars)



60

(2006/3/9)

152

2005

2002

1.2



(2006/3/6)

Oval BA

2000



(2006/2/22)

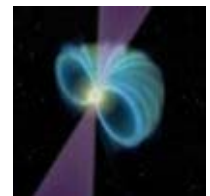
:



(2006/2/22)

3

4



(2006/2/9)

.(supergiant)



(2006/1/25)



(2006/1/21)
2006

36000

3

9

2015



(2006/1/16)
(Stardust)

2:10

2004

.2006/1/15

28

81P/Wild



(2006/1/10)

.(Polaris)

0.2

Ab

3.2

